

Target Handle for Aircraft Ground Handling and aircraft Ground Handling Agencies

Target Handle Is an integrated operation and accounting system specifically designed for automating Aircraft Ground Handling and aircraft Ground Handling Agencies.

Target Handle system has many powerful automated tools and smart aids to support users in handling both the operation system and in accounting system.

The Avionic field has a special feature where everything is going fast and sensitive where there a lot of data transferred between airport and the aircraft company and the handling agent like: Aircraft registration, aircraft company, required service, arrived airport, arrival flight number, arrival passengers, date and time of arrival aircraft, destination airport, departure flight number, departure passengers, date and time of departure aircraft and domestic and international passengers.

Most of this data are changed suddenly and the services provided to this aircraft depend on accuracy of that data where the aircraft handling fees depend upon aircraft maximum Wight, aircraft type, number of passenger, arrival airport, landing time (Day or night), parking hours, the vendors of service provider, vendor discount ratio and many other factors so it is very hard to manage this services manually from operation or account point of view.

So **Egyptian Computer Center** developed a unique and smart automated system (**Target Handle**) to manage avionic handling agencies and aircraft charter companies by a selected developer who had an experience more than 20 years in automated aviation field.

Target Handle Operation is a subsystem of **Target Handle** which manage the operation department through numerous number of periodical operational reports which declares all arrival and departure flights with detailed data which includes: Aircraft registration, aircraft company, required services, arrival airport, arrival flight number, arrival passengers, date and time of arrival aircraft, destination airport, departure flight number, departure passengers, date and time of departure aircraft and domestic and international passengers.

Target Handle Account is a subsystem of **Target Handle** which is integrated with **Target Handle Operation** and it is designed to manage the accounting department where the system stores the customers contracts and vendors contracts and all system accounting rules so the user can extract customers invoices according to customers contracts and operational data which affects customers balances and the system revenues and also the user can revise vendor's bills which affects vendors balances and the system cost which will lead to extracting accurate trial-balance or gross profit or net profit.

Target Handle is the ideal solution for the management of Aircraft Ground Handling companies and aircraft Ground Handling Agencies More accuracy... and less effort

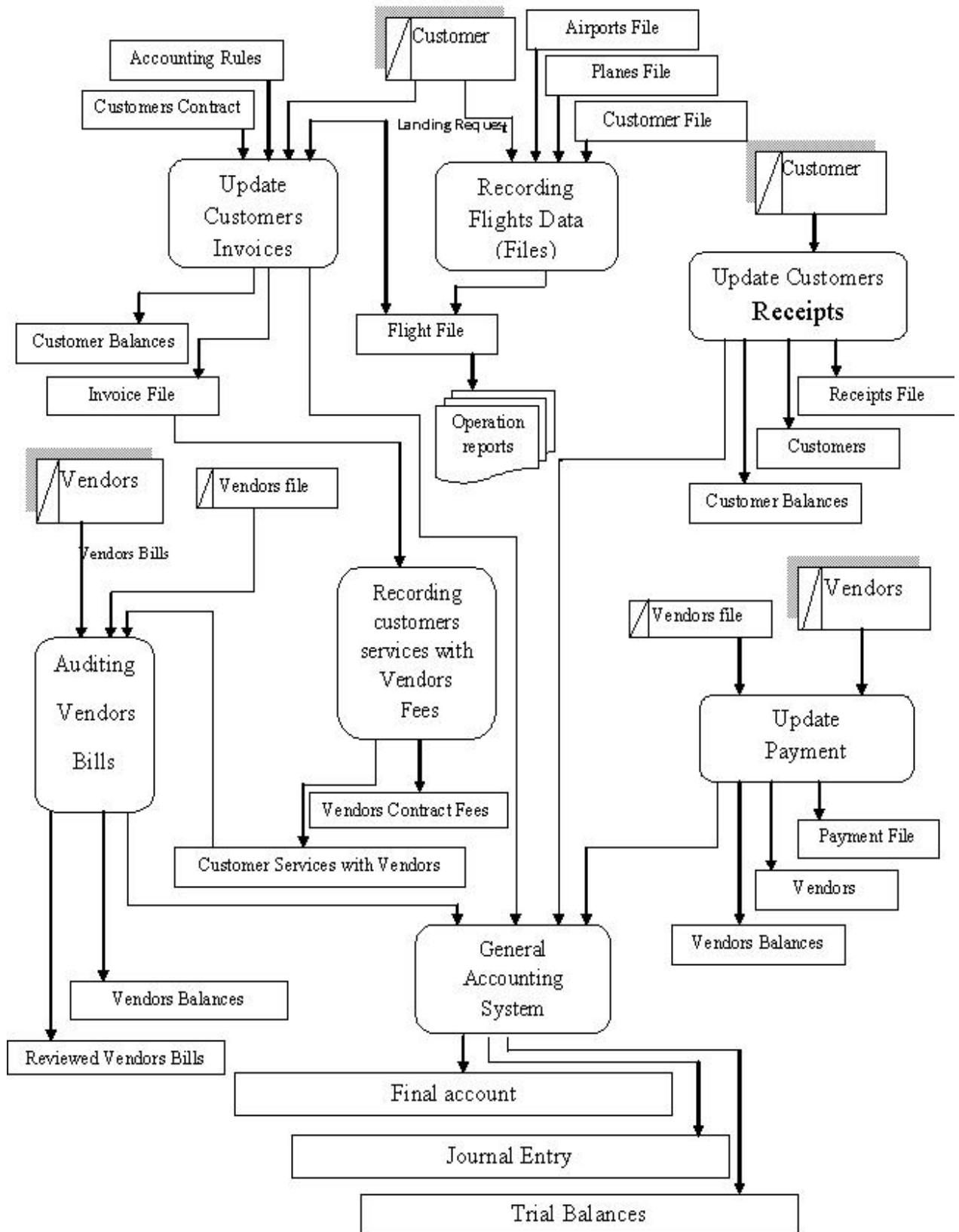
Target Handle contracting system is a flexible system, accurate and easy to use.

Target Handle has several ways to price services for different customers in many ways:

- 1- Customers contract services fees according to customer category, day or night service, the aircraft type and station (arrival airport).
- 2- Customers contract services fees according to customer category, day or night service, the aircraft registration and station (Arrival airport).
- 3- Discount granted by agent to customer.
- 4- Discount granted by vendor to customer.

- **Target Handle** has logical Data verification and audit tools.
- **Target Handle** has an Easy data flow system so it doesn't need good experience in aircraft handling services or aircraft handling and account.
- **Target Handle** has self correction mechanism in order to filter data.

Target Handle System Data Flow Diagram



This system is divided to two subsystems

First subsystems: Target Handle for Operations

"**Target Handle operations**" is a Customer Relation Management software to Manage operation Department is an easy and accurate system to following up handling aircraft starting From getting flight permission, reserving Catering, reserving fuel, booking hotels, landing and parking services, ground equipments handling and security services and any other services by organizing there services and allocating the suitable human resources for this service.

The customer will get the best service in short time and proper way so the customer will be completely satisfied with his handling agent.

The most important features of Target Handle Operation

- Extracting operational flight periodical reports which declares all arrival flights and departure flights for any period of time (daily – weekly – monthly) which includes : Aircraft registration , Aircraft type , Aircraft company , arrival airport , arrival date and time , arrival flight , arrival passengers , destination airports , departure date and time , departure flight , departure passengers and domestic and international passengers .
- By Target handle operation user can Follow up customers flights in different stations by extracting several managing reports which declares customers data, aircraft data, landing and departure date and time and the aircraft services required and so the agent can allocate the suitable personal and equipments in order to handle the customer aircrafts easily.
- Target handle operation has elegant, easy, accurate and flexible contracting system which takes in its considerations different types of discounts (vendor's discounts for certain customer's and agent discount for certain services) and vendor's rules and regulations.
- Target handle operation extracting customers invoices according to customers contracts (The Fee for every service is determined by station and aircraft type or registration) with the discount granted by some Vendors from that service.
- By Target handle operation can easily follow up of customer's invoices settlement.
- Extracting the user financial position for any customer at any time.

The contents of the

First: The basic data for aviation services and flights

The most important features of the system

- Registration data airports internal and external names of Arab and Latin countries using 3 letters or 4 letters (using IATA - ICAO).
- System could deal with all currencies can be done to the conversion of currency.
- Database covering States.
- Items are structural in main Categories and sub Categories.
- Be item is related to avenue account and accost account and it will be related by suitable vendor.
- The database includes the companies fleet (customer fleet) and includes this data: (aircraft registration -maximum take off weigh - aircraft type –the owner- owner data - operator-handling requestor - handling payee – aircraft motion [privet-commission - cargo-military-.....]).
- Flight data recording which includes aircraft data and Aircraft Company and timing for the trip and all services required like ground services or refueling or catering or hotel reservation.

Most important reports

- Airports
- Egypt Airports
- Currency list
- Countries list
- Items and Services Categories List
- Items Categories List
- Items and Services Prices With Categories List
- Items Vendors List
- Vendors Items List
- Plans List By Ac Registration
- Plans List By 3 Letters
- Plans List By Ac Type
- Plans Grouped By Ac Type
- Plane Type Groups
- Plans Type List

- **Plans List**
- **File Data**
- **Periodic Operation**
- **A/C Flight Operation sheet**
- **Fuel Operation Reservation**
- **Catering Operation Reservation**
- **Hotel Operation Reservation**
- **File Transaction**
- **Application**
- **Executed Class and Miss File**
- **Daily Management Report**
- **Statistical Flight Report**
- **Daily Operation Report**
- **Daily Over Fly Report**
- **Daily Report**
- **Reservation Request**

Second: The account receivable

The most important features of the system

- Customers data base (managers data and addressing – operation data and addressing – accounting data and addressing – a customer pay method [pre payment – cash – credit] in addition customer grace periods.
- Recording customer's contracts which include services fees for each type in each station and also it can be for each aircraft registration in each station and target handle will put giving values for each service (service equipment-ground landing- parking – fueling -messages).
- extraction customers invoices well be based :
 - 1- Flight timings mentioned in the data file (the trip).
 - 2- Customers contract fees according aircraft type.
 - 3- Issue an automatic a journal entry to cures pounding to invoice.
 - 4- Increasing the revenue cording to the invoice data.
- Debiting is customer balance with net amount of the invoice.
- The system could issue debit notes or credit notes.
- Issue an automatic a journal entry to corresponding accounts automatically..
- Are influencing customer balances automatically and immediately.

Most important reports

- Customer Statement
- Invoice Receipts Details
- Credit On Invoice
- Credit On Account
- Customer Summery Transactions
- List For a Period
- Invoice Handle
- Debit Note
- Invoice Class B And Miss
- Fuel Invoice
- Invoice Over Fly
- Invoice List
- Recapitulation
- Basic Contracted Items
- Customers Exceeds Credit Limit
- Files Without Invoices
- Invoices of Files
- Invoices of Receipts

Second subsystems: Target Handle Account

"Target Handle Account" is a full accounting system its accurate, flexible , designed special for Aircraft Ground Handling company and aircraft Ground Handling Agencies Target handle account integrated with the first subsystems Target Handle Operations , Target Handle account will calculate the cost services provided by the vendors at the different airports according to vendors fees and rules..... so the user can generate vendors bills and automatically Target Handle Account generate journal entries and affects vendors balances, the cost accounts, costs.

The most important features of Target Handle account

- Managing vendors' accounts (account payable) and general accounts and tracks financial transactions.
- Target Handle account also validates (audit) different vendor's bills accordance to
- vendor's contracts and vendors' – customer's discount.
- By Target Handle account user can extracting financial position of any vendor at any time.
- By Target Handle account user can and track any account in the system where recording and transaction Target Handle account.
- Generate an automatic journal entry to the proper accounts automatically and update its balance.
- Taking in consideration the discounts given by vendors for some customers.
- Easy banking system to control the checks cycle Payable notes and receivables notes and cash.
- Auditing bank accounts balances and transaction.
- Audit and monitor all financial transactions in the company through a Target handle account.
- Tracking Stations Costs and Revenues.

In **Target Handle** you can connect different airports (stations) by using normal telephone line and within few minutes **Target Handle** can consolidate data and generate an updated database or by **Target Handle** also you can access central database in main station and updated database online (instantaneously) so the user can extract any updated reports at any time.

Target Handle for Aircraft Ground Handling and aircraft Ground Handling Agencies is an easy, accurate and flexible System in which the data can easily propagate From Operation system to accounting system easily and efficiently and vice versa.

Target Handle has many user rights, different security level and authority; it has powerful auditing tools and could be integrated with another software system (payroll system).

The Target Handle Account contents:

First: account payable system

The most important features of the system

- Record all vendors data and with their currencies.
- Recording vendor's contracts and vendors - customers discount contracts for some services.
- Recording of vendor's transactions where the target system recalculate the transactions (Extracted from customers invoices) according to the vendors services fees and rule at the Different airports.
- Recording vendors claims of all types of services in advance of vendors issuing bills.
- Instantaneously update general accounts by generating ledger entries.
- Target system will post the correct vendors transaction and update vendor's balances.

Most important reports

- Vendor Statement.
- Vendor list with transactions Summary for payee.
- Customer / vendor Statement.
- Vendors Transaction.
- Landing and parking Airports Fees for Egyptian Company for Airports.
- Landing and parking Airports Fees for Cairo Airport Company.
- Landing and parking Airports Fees IMAC.
- Landing and parking Airports Fees Algona.
- Claims of messages Exchange and commercial telegrams.
- Claims of equipment charges.
- Claims of fuel charges.
- Claims of LDCS charges.
- Claims of Departure charges.
- Claims of catering charges.
- Claims of hotels charges.
- Claims of fine charges.
- Claims of Cute System charges.
- Claims of counseling service charges.
- Claims of Security charges.
- Claims of the technical sector charges.
- Claims of Lounge 4with US dollars currency charges.
- Claims of Lounge 4 with Egyptian pound currency charges.

- **Files have no vendor's Transaction.**
- **Bills Transaction vendor.**
- **Bills have no Transaction vendor.**

Second: The service fees

The most important features of the system

- **Registration of vendors services fees in accordance with vendors rules which are for example :-**
 - **Registration of fees for each aircraft landing and parking fees according to the weight of the aircraft or according to the aircraft type.**
 - **Registration of fees for each aircraft equipment according to the weight of the aircraft or according to the aircraft type or Registration fees**
 - **Registration of refueling Service according to the vendor's rules.**
 - **Registration fees for LDCS services.**
 - **Calculating the Annual discount granted by the LDCS vendor of to the agent.**
 - **Registration of customer - vendor Contract and discount granted by vendor for a particular customer for the some service over a period of time.**

Most important reports

- **Refueling fees.**
- **Equipment Service fees for aircraft by aircraft weight.**
- **Equipment Service fees for aircraft by aircraft type.**
- **LDCS Service fees.**
- **Annual discount for LDCS services.**
- **Landing and parking fees by aircraft weight.**
- **Equipment Service fees for aircraft by aircraft weight for Marsa Alam airport.**
- **Equipment Service fees for aircraft by aircraft type for Marsa Alam airport.**
- **Discount granted by the vendors to customers of certain items.**

Third: The banking system

Banking System it is a user friendly financial tracking system of payable notes, receivables notes, cash and banks balances account. The system generates the appropriate Journal Entry.

The most important features of the system

- The system is follow-up checks (deposit-collection-charging - recovery).
- System allows multiple fund and currencies.
- The system audit works with the banks statements.
- The system generates the appropriate Journal Entry of each (a check-cash cycle) transactions.

First: the check cycle

- Receiving the check through the Receipts.
- Accumulation checks in the portfolio checks.
- Collecting checks and depositing in the cash account through the recording of the bank notice.

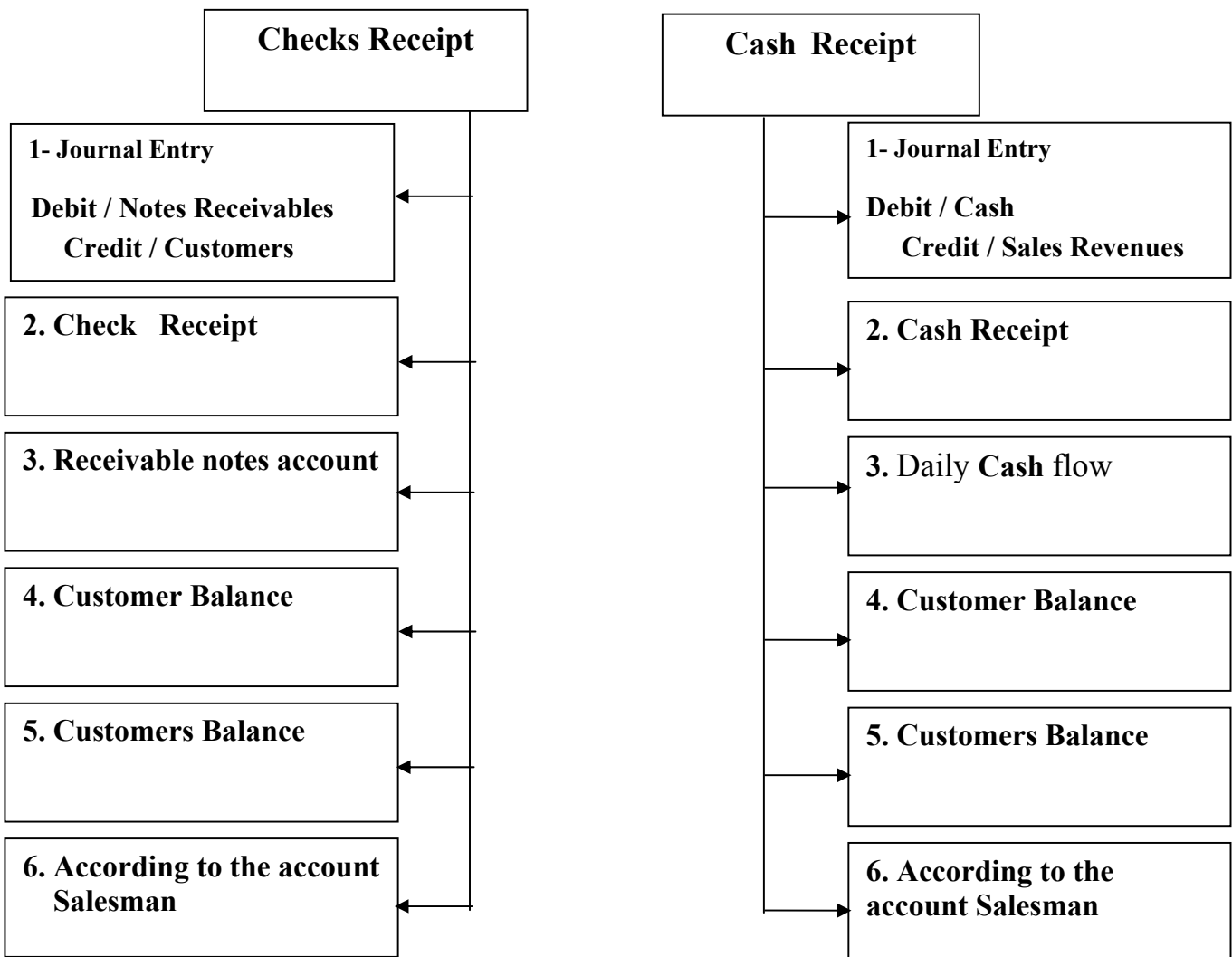
Second: the cash cycle

- Receiving the cash through the Receipts.
- Collecting cash and depositing in the current account.

Most important reports

- Daily Cash flow.
- List of the cash transaction, checks and deposit portfolios.
- Bank Notices.

The chart below shows how target prose's the cash and receipts in terms of whether or checks



Fourth: The system stores and fixed assets

The most important features of the system

- The ability to code the items with cretin number of character.
- The system can handle Inventory and assets.
- Using different items units in any transaction.
- The system uses multiple price categories.
- System tracks the stocks of items in stock.
- The ability to record (minimum level - Reordering level - maximum level) for each item.
- The system tracks issue addition, adjustment and transform transactions.
- The system allows recording cash bills and credit bills.
- The ability to make vendors returns according to existing purchase bills or without.
- The ability to update item cost automatically according to the bill purchase price.
- Numbering purchase bills and its returns either automatically or manually.
- The system generates document addition when recording purchases bill and generates issue document when recording purchasing returns automatically.
- Instant updating in stores items balances.
- The system displays the units of bills items.
- Instantaneously update general accounts by generating journal entries.
- Possibility of using deferent discount types in the bill.
- The ability to know the bills posting status.
- Fixed assets registration data with the registration departments where these assets.

Most important reports

- Priced purchase order.
- Purchase bills list.
- Daily stores.
- Item transaction history list.
- List of the expenditure departments.
- Issue and addition document
- Detect balances items denominated purchase price.
- List of items and units salary packages.
- List of stores.
- Stations a list of assets and their subordinate departments.
- List of the locations departments.
- List of departments.
- List of origin.

Fifth: General ledger

The most important features of the system

- Possibility of coding accounting chart up to (18 digit) for the account.
- The user format the accounting chart through several levels of scalable and structural way.
- The user assigns proper currency for account.
- Registration of journal entries using multi currencies using currency exchange rate.
- Automatically renumbering of daily journal entries.
- Extraction of the Balance Sheet and Operating Account and Profit And Loss Account at any time of the year.
- Registration opening balances.
- Getting balances at any time without posting the transaction.
- Handling Of journal adjustments.
- Possibility of using multiple currencies in the same entry.
- Generating journal transaction from tow ways :-

First: Automatically

When egesting a transaction such as (invoices-debit note –purchases- credit note -receipts-payments). TARGET generate the proper journal entries that are registered in the system

- Update the account balances upon registration of journal ledger without the need for Posting.
- Can extract the final accounts Balance Sheet and Operating Account and Profit And Loss Account at any time.
- Closing of the financial year automatically and extracting journal entry resulting from the Closure.

Second: manually

Through the system journal ledger for special situation, such as: (selling and assets).

- Could not register and unbalanced journal entries.
- TARGET system allows registration opening balances of accounts and generates the proper journal entries.

Most important reports

- Balance Sheet.
- Balance audit MAT and balances.
- Accounting chart.
- Journal Entry.
- Summary of Journal Entry.
- Operating Account list.
- Profit and Loss Account list.

- **Accounts balances list.**